

REVISION					
REV	DATE	DESCRIPTION	DN	CH	AP
A		INITIAL RELEASE			

NOTES:

- MATERIAL: ZINC SELENIDE II-VI PRISM GRADE
- TOLERANCES
 $\beta = 90^\circ \pm 0.1^\circ$
 $\alpha = 18.5^\circ \pm 0.1^\circ$
 BEVEL FACE WIDTH: $0.5 \pm .13 @ 45^\circ$ ALL EDGES

3 PYRAMIDAL ERROR:
SIDE 1 TO SIDE 2 = $\pm .1^\circ$

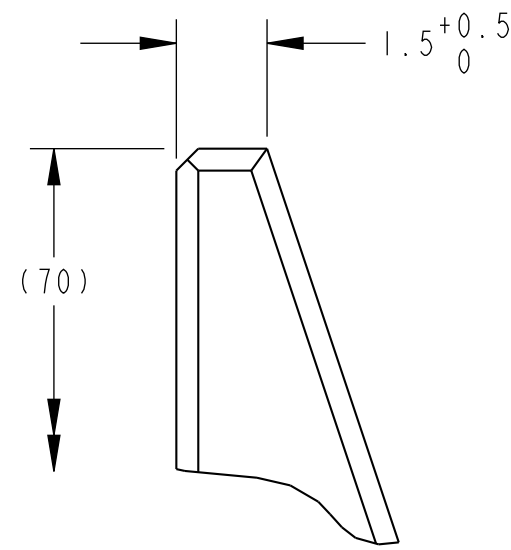
4 SIDE 1: PLANO (POLISH)
POWER: 2 FRINGES @ $.6328 \mu\text{m}$
IRREGULARITY: 1 FRINGE @ $.6328 \mu\text{m}$
SCRATCH/DIG: 60/40
COATED APERTURE: SEE DRAWING

5 SIDE 2: PLANO (POLISH)
POWER: 1 FRINGE @ $.6328 \mu\text{m}$
IRREGULARITY: 0.5 FRINGES @ $.6328 \mu\text{m}$
SCRATCH/DIG: 60/40
COATED APERTURE: SEE DRAWING

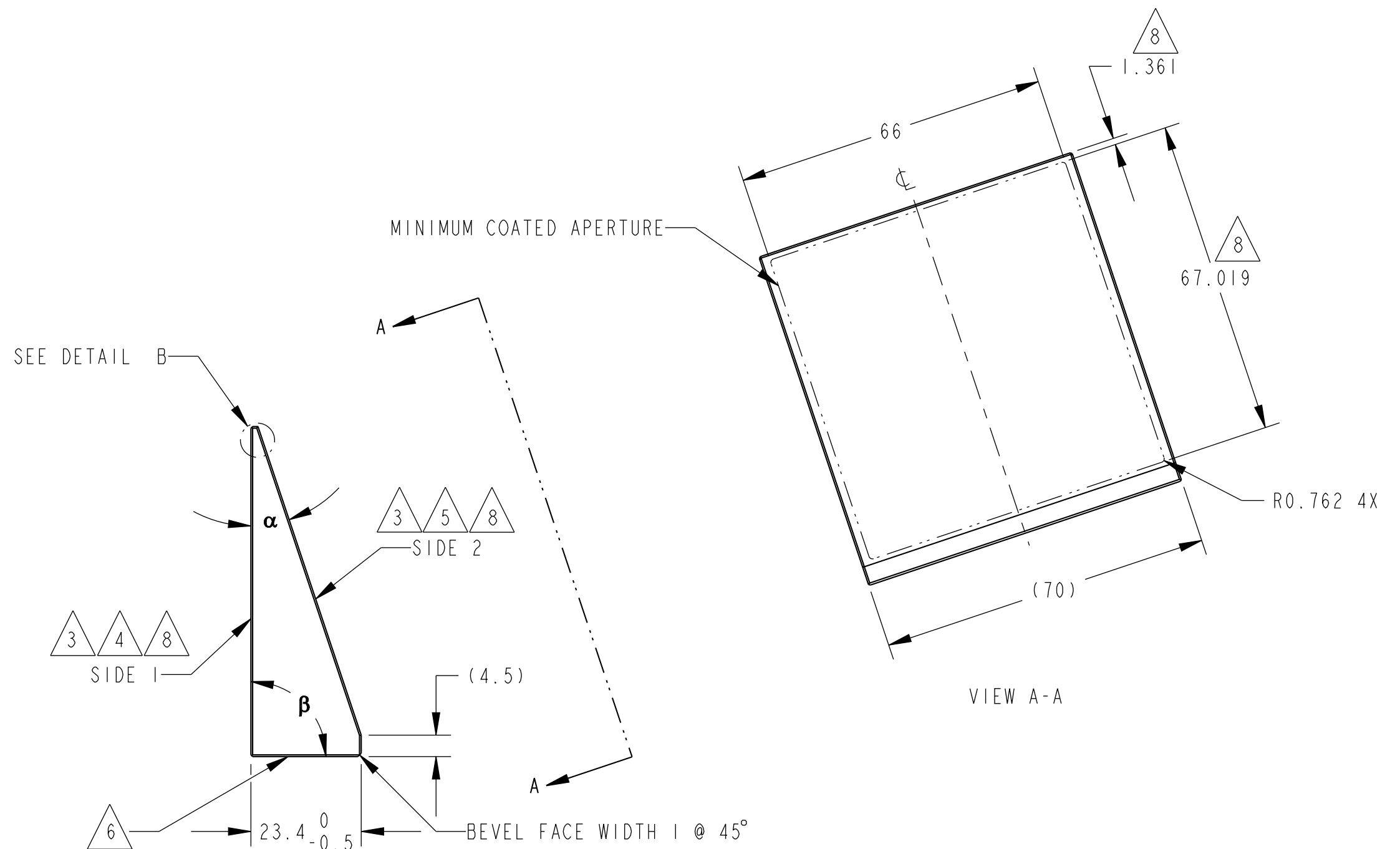
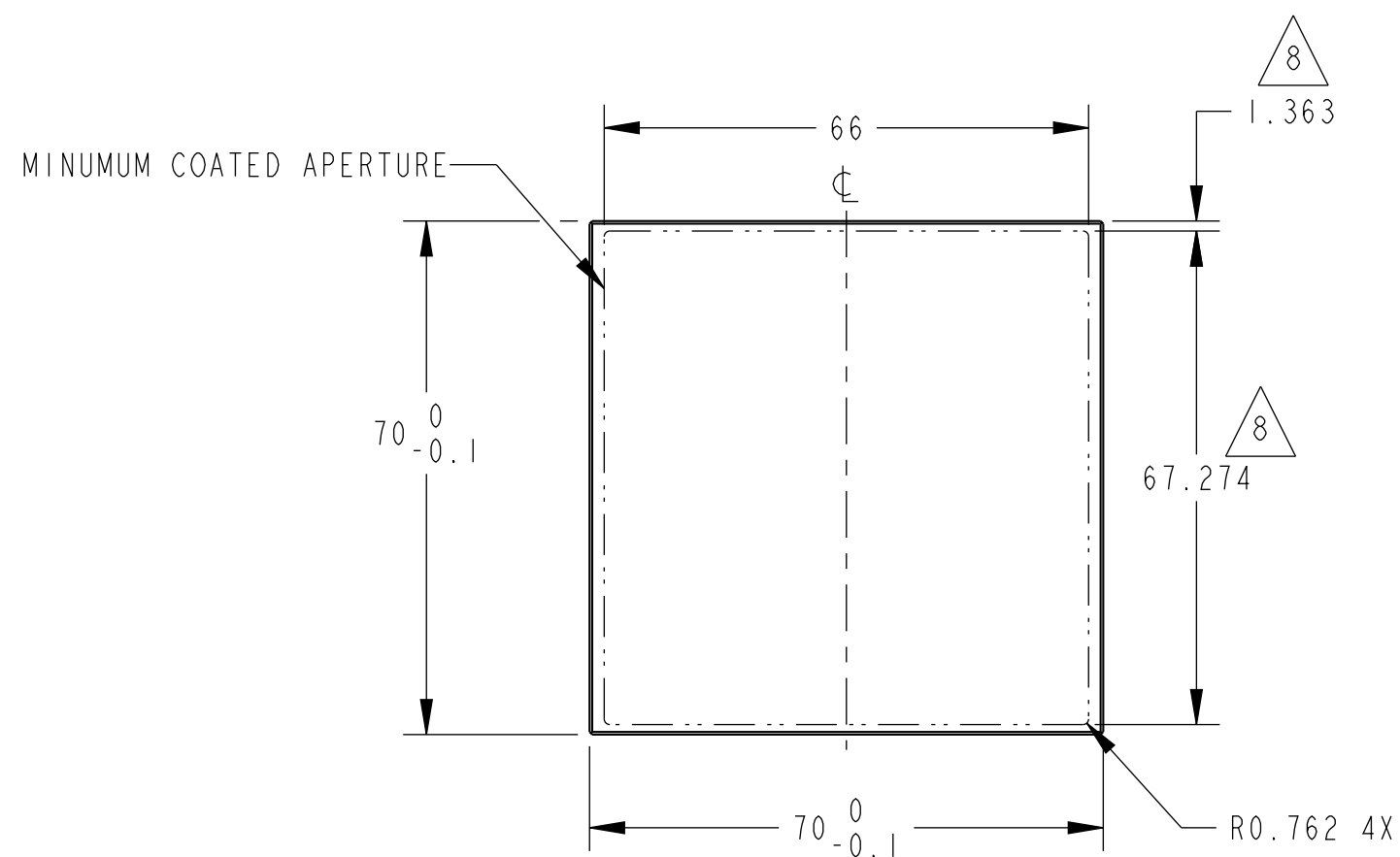
6 VIEW POLISH FOR INSPECTION.

7. ALL OTHER SURFACES AS GENERATED.

8 COATING: BBAR/BBAR
TEST AT ROOM TEMPERATURE
TEST SIDE 1 IN AIR AND COMPARE TO THEORETICAL
%R $\leq 0.5\%$ AVG.
%T $> 95\%$
PART TO HAVE MINIMUM 1mm UNCOATED LIP INSIDE BEVEL

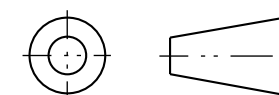


DETAIL B
SCALE 8/1



II-VI PROPRIETARY INFORMATION
THIS DOCUMENT IS PROPERTY OF II-VI INCORPORATED
AND MAY NOT BE USED OR REPRODUCED WITHOUT WRITTEN
CONSENT OF OWNER.

THIRD ANGLE PROJECTION



		UNLESS OTHERWISE SPECIFIED DIMENSIONS ARE IN MILLIMETERS AND PER ANSI Y14.5M-1994 TOLERANCES ARE: $\pm .08$ ANGLES $\pm 0.5^\circ$ FOA 0.8 μm BREAK ALL EDGES .13 MAX	DO NOT SCALE DRAWING
		MATERIAL SEE NOTE 1	APPROVALS DATE DN A. J. F. 16-May-09
NEXT ASSY.	USED ON	FINISH NA	CHK APVD
APPLICATION			APVD

II-VI INFRARED 375 Saxonburg Boulevard
Saxonburg, PA 16056

TITLE ZnSe PRISM 70mm X 70mm X 23.4mm THK		SIZE C	CAGE CODE 57128	DWG. NO. C900058	REV A
SCALE 1/1	SHEET 1 OF 1				